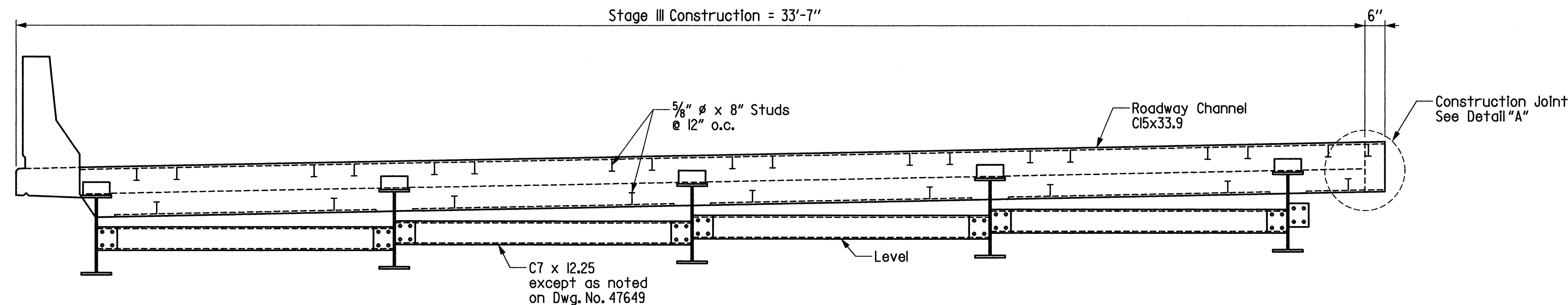
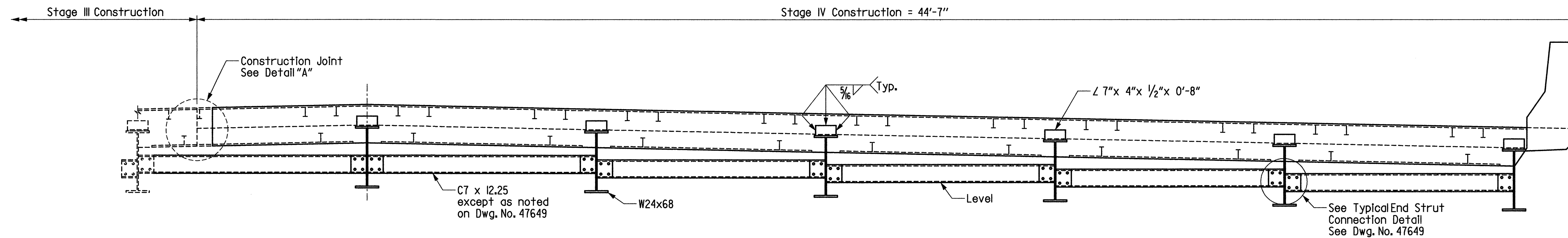


DATE REVISED	DATE FILMED	DATE REVISED	DATE FILMED	FED. ROAD DIST. NO.	STATE	FED. AID PROJ. NO.	SHEET NO.	TOTAL SHEETS
				6	ARK.			
				JOB NO.		040455	126	394
				07048	SPAN DETAILS		47648	



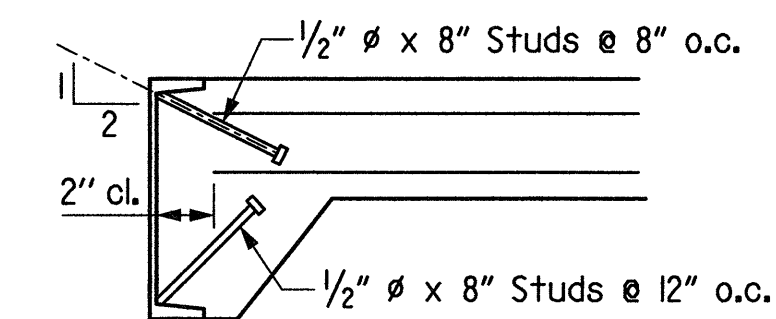
VIEW AT C.L. JOINT - STAGE III CONSTRUCTION

(Looking Ahead)
1/2" = 1'-0"



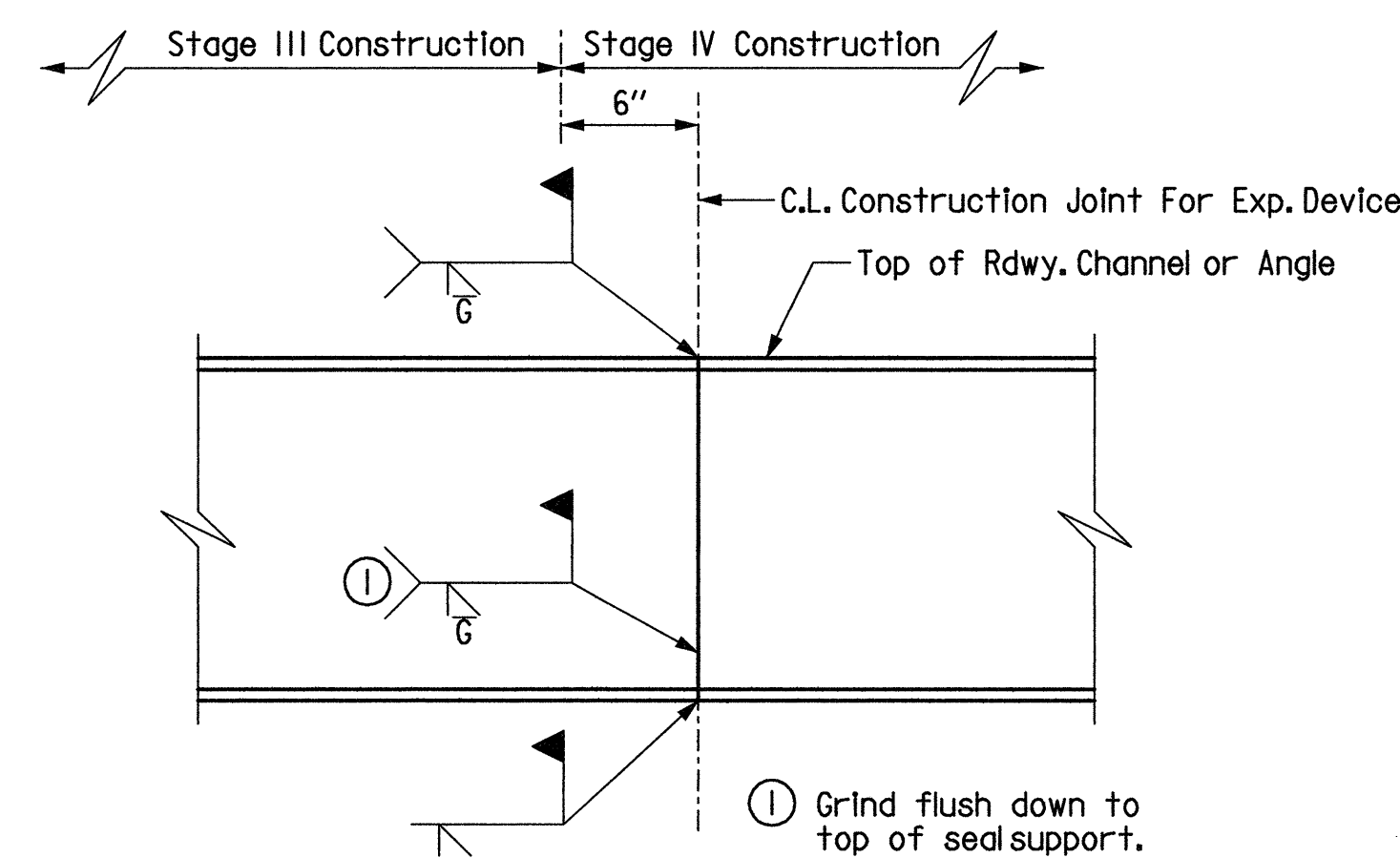
VIEW AT C.L. JOINT - STAGE IV CONSTRUCTION

(Looking Ahead)
1/2" = 1'-0"



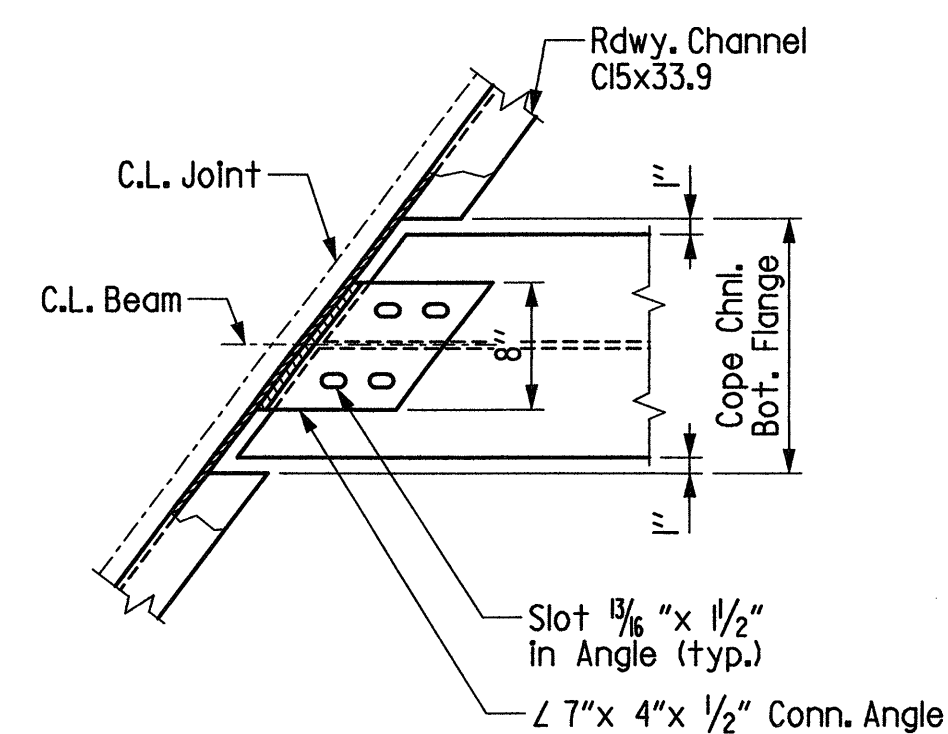
Note: As an alternate to 5/8" studs, 1/2" x 8" studs spaced as shown may be used. Use weight of 5/8" stud as basis of measurement of structural steel in anchors.

DETAIL OF
ALTERNATE ANCHORS
No Scale

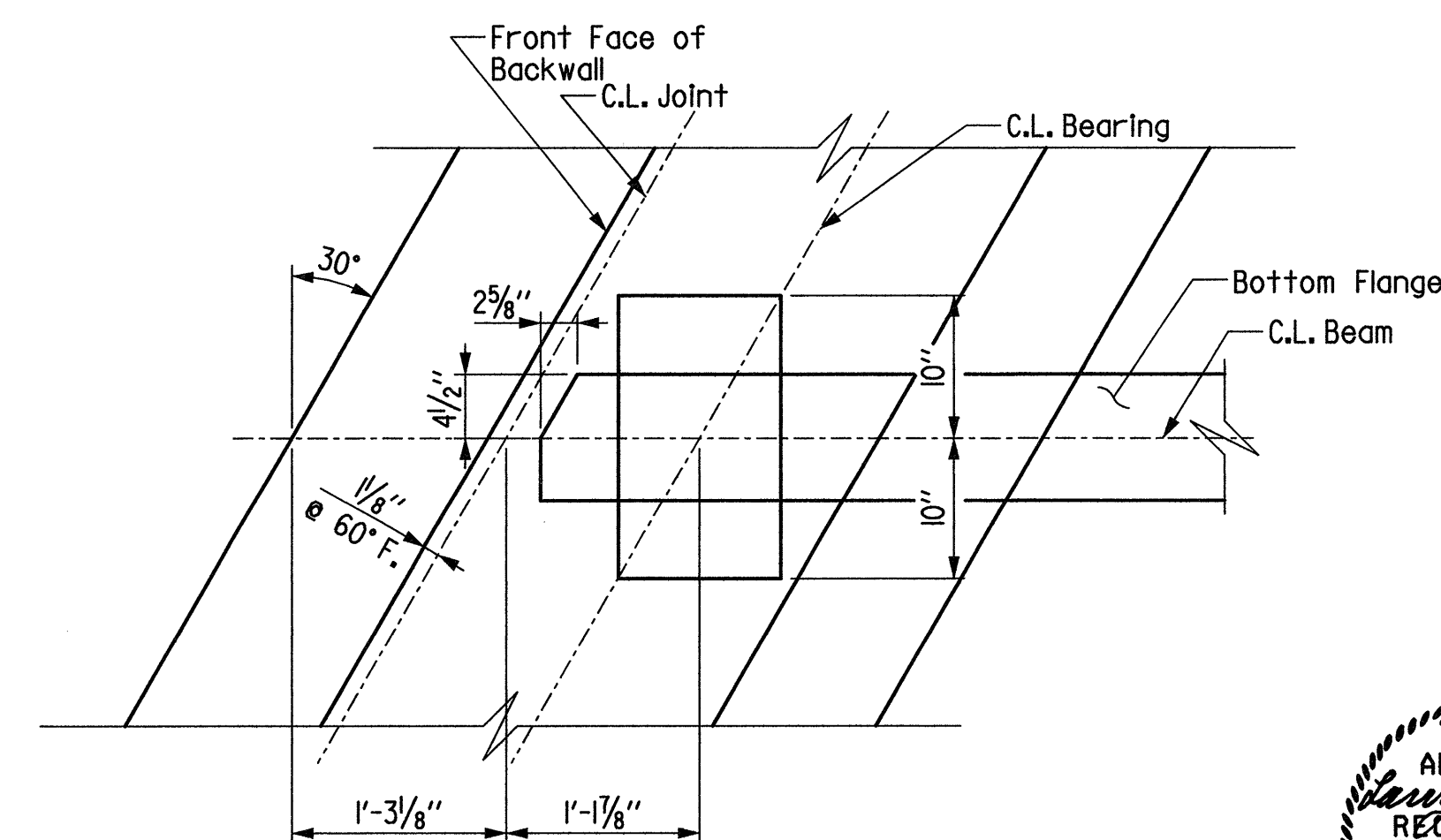


DETAIL "A" (EXPANSION DEVICE
AT STAGE CONSTRUCTION JOINT)

1/2" = 1'-0"



ROADWAY CHANNEL CONNECTION DETAIL



BEARING PLAN AT END BENT



ALTERNATE NO. 1
SHEET 2 OF 6
DETAILS OF 111'-0" CONTINUOUS
COMPOSITE W-BEAM UNIT
LITTLE VACHE GRASSE CREEK

ROUTE 22 SEC. 1
ARKANSAS STATE HIGHWAY COMMISSION

LITTLE ROCK, ARK.

DRAWN BY: JE DATE: 6-05 FILENAME: b040455il.sl2.dgn
CHECKED BY: LM DATE: 6-05 SCALE: AS SHOWN
DESIGNED BY: DM DATE: 6-05

BRIDGE NO. 07048

DRAWING NO. 47648